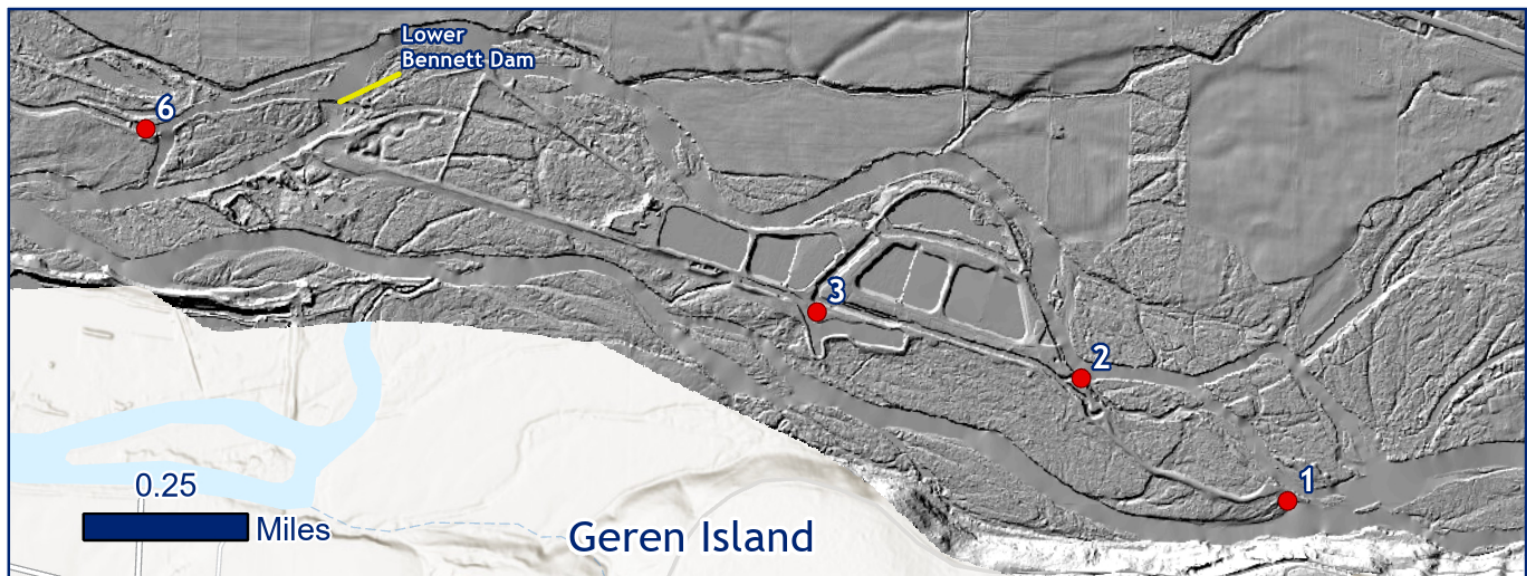


District Tour 2024

- 1 - Upper Bennett Dam
- 2 - COS Intake
- 3 - Ozone Treatment Facility
- 4 - Snowpeak Brewery (Lunch)
- 5 - SWCD Hydro
- 6 - SWCD Fish Screen
- 7 - Water Delivery/Farm Infrastructure
- 8 - Heritage Seedlings



Instructions for Installing Esri Field Maps on a Mobile Device

ArcGIS Field Maps is available for free through the App Store for both Android and iOS devices.



Search by name (ArcGIS Field Maps) and select install or “get”.

Locate “ArcGIS Field Maps” from the list. Select by tapping the ArcGIS Field Maps icon from the list and select “Install” to install.

Skip the option to login if prompted to do so. There is no need to login to access the webmap.

Once you have installed Field Maps, use the camera on your phone to scan the QR code below. The QR code should launch an interactive webmap of today’s tour locations within Field Maps.

There are some locations on the tour where cell service can be weak (e.g., Geren Island). As a result, there may be times during the tour when you are unable to access the webmap.

